



September 2005



RMKC Newsletter

Rochester Minnesota Kennel Club

All-Breed Dog Show & Obedience Trial - September 17 & 18

The 2005 show is just days away! The show chairs & committees have been hard at work adapting to the different show site & trying in every way they can to make sure everything goes smoothly. This year's show site is the *Regional Sports Center* on the *University Center - Rochester* campus. Conformation judging & grooming will be in the Field House - Obedience judging will be in the gymnasium - Vendors will be located in the Commons area (if anyone would like to see a map of the facilities, go to www.rtc.edu/campustour/maps/sportscenter1.html)

Friday, Sept. 16 - vendors & exhibitors can gain access to the facilities, including parking campers, at noon. Specialties for Chinese Shar Pei & Labrador Retrievers, along with the Canaan Dog Club of America's National Specialty, will take place.

Saturday, Sept. 17 - All breed show; Obedience C Match to start approximately 1/2 hour after completion of all regular & non-regular obedience classes.

Sunday, Sept. 18 - All breed show

Volunteers are always welcome for setting up (Friday) & taking down (Sunday following Best in Show). Anyone available to serve as a ring steward should contact Julie Prentice (529-2977 or

japren@aol.com). If anyone knows of a group that would like to earn money by being the grounds crew (aka "clean-up at ring 1", etc) they should contact Paul Henning ASAP (286-1241 or 281-6120 or pkhdestiny@msn.com)

Information & links can be found on the RMKC website
<http://www.rmkc.8m.com>



In This Month's Issue

RMKC All-Breed show	Cover
Letter from the Editor	Cover
RMKC Picnic	Page 2
Hurricane Katrina relief	Page 2
Board meeting reminder	Page 2
August meeting minutes	Page 2
Meeting Programs	Page 3
Treats volunteers	Page 3
Two Wolves	Page 3
Braggs	Page 3
Officers & Board Members	Back Cover

The Deadline for the October issue is
Wed, Sept 21, 2005

Letter from the Editor

Bring on the chaos! With the Agility match this coming weekend & the All-breed show just 2 weeks after that, its about to be raining dogs & more dogs in Rochester. On the one hand, I'm pretty excited - you can't beat the agility match for excitement, whether you're a participant or a spectator (I get to be the latter this year), & I enjoy the idea of being able to show just 5 minutes from my house. On the other hand, being booth chair for the all-breed has been a learning experience - finding vendors, trying to plan for a totally new show site, having to turn vendors away (that'll teach 'em to wait until the last minute) - I don't know how it will all turn out, but I know that all members of the show committee have been working hard to make this year's site work & to make this a great show! So bring it on! We're ready to rumble (growl, bark, whatever...)

Good luck to everyone participating in these events!!

Diana Mann

Email me at: murphyman88@yahoo.com

Fun Had by All Who Attend 2005 RMKC Picnic

Great food & great fun were the order of the day for the 2005 RMKC Picnic. It was a beautiful evening at the Grovdahl farm that began with a potluck supper, including fried chicken provided by the club & a plethora of tasty dishes contributed by the members. Following a brief meeting, it was on to fun & games. Dogs & their owners participated in such contests of skill as "Bobbing for Treats" (a big hit with the Golden Retrievers in the crowd), "Hot Dog Toss" (with a close final match-up between Renee & Ripley McGovern vs Mackenzie & Berry Mann), & the "Dog Tricks Relay Race" (won both times by the same team). The evening concluded with some fun on the agility equipment. It's hard to say who was having more fun - the dogs or the owners. A HUGE thanks to the Grovdahls for opening up their home & acreage - thanks to the game planners for the fun & prizes - & thanks to all who attended!

Hurricane Katrina Relief

Contributions to the *AKC CAR Canine Support and Relief Fund* can be made online through an account in the AKC online store. If you have an account, simply log in & click on the Donate to Support & Relief Fund option. If you prefer to mail your donation, please make checks payable to the *AKC CAR Canine Support and Relief Fund* and mail to:

AKC CAR Canine Support and Relief Fund
American Kennel Club
260 Madison Ave - 4th Floor
New York, NY 10016-2401

You may also call #800-252-7894 to make a donation to the fund.
(Information from the AKC website: www.akc.org)

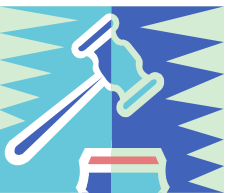
Petco is also raising money for 4-legged victims of Hurricane Katrina with an Emergency Round Up fundraiser, asking shoppers to donate by rounding up their purchases to the next highest dollar. Customers may also donate online at Petco.com. The donations raised in the fund-raiser, which runs until Sept. 11, will go to Petco's own charitable foundation to be spent on animal welfare-related disaster relief needs in the Gulf Coast region. The retailer will coordinate its relief efforts with the American Humane Association and the Humane Society of the United States, as well as local animal shelters.

Attention all Board Members

There will be a meeting of the Board prior to the General membership meeting on September 12th.

Place: Good Shepherd Lutheran Church

Time: 6:00 pm



RMKC General Membership meeting – Monday, August 8, 2005

Members present: Julie Prentice, John & Linda Limpert, Diana & Mackenzie Mann, Julie Davies, Amy Stern, Nicole Cherry, Renee McGovern, Caroline Baihly, Pat Campbell, Linda Cornick, Lynn Grovdahl, Paul & Kris Henning, Carole Sorenson, Elaine Drescher.

Following an enjoyable potluck meal, the meeting was called to order by President Julie P. There was no President's report.

Recording Secretary: Minutes for the July meeting were presented for approval. Motion was made by John L., seconded by Nicole C. to approve minutes; motion carried. Corresponding Secretary was not present, so no report given.

Treasurers Report: Caroline B. gave financial overview. She reported on insurance for the new electronic timing equipment & discussion followed. Caroline will check into it some more to clarify some of the language of the coverage.

Old Business: 2005 Agility Match – entries are coming in ok – members are to contact Denise Wedel if they can help. Set up & vendors were also discussed. 2005 Show Report – Diana M. gave the information she had as far as booths/vendors – Julie mentioned volunteers are still needed for stewarding. There was no New Business

Motion to adjourn the meeting was made by Caroline B., seconded by Renee M.; motion carried. Meeting adjourned at 7:27 pm. Meeting was followed by games for dogs & their owners.

Respectfully submitted,
Diana Mann

Get with the Program!

The Programs Committee would like to present the list of programs for the remainder of the club meetings.

October: Earth Dog Trials - presented by RMKC member Duane Pulford
 November: Canine Chiropractic Care
 December: Club Christmas Party
 January: Scrapbooking
 February: Westminster Watch
 March & April: to be determined



RMKC Members Volunteer to bring Treats to Meetings

Could your Monday evening be any better - an RMKC meeting AND a tasty treat! The following members have volunteered to provide treats for a meeting:

September - Julie Prentice
 October - Carole Sorenson
 November - Kris Henning
 January - Pat Campbell
 February - Beth Haas
 March - Liz Forss
 April - Marie Christianson
 May - Julie Davies
 June - Linda Cornick



TWO WOLVES: One evening an old Cherokee told his grandson about a battle that goes on inside people. He said, "My son, the battle is between two wolves inside us all. One is Evil. It is anger, envy, jealousy, sorrow, regret, greed, arrogance, self-pity, guilt, resentment, inferiority, lies, false pride, superiority, and ego. The other is Good. It is joy, peace, love, hope, serenity, humility, kindness, benevolence, empathy, generosity, truth, compassion, and faith." The Grandson thought about it for a minute, and then asked his Grandfather: "Which wolf wins?" The old Cherokee simply replied, "The one you feed."

Submitted by Kris Henning & Carole Sorenson

MEMBER BRAGS

Caroline & Art Baihly

Webshire's Tri-Athlon JH

Flat-Coated Retriever Society of Canada Agility Trial - July 21

Trial 1 - Novice B - 1st leg - 2nd place

Trial 2 - Novice - 2nd leg

Thunder Bay Cocker Spaniel Club Obedience Trials - July 23 and 24

Trial 1 - 1st place Novice B HIT

Trial 2 - 2nd place Novice B

Trial 3 - 1st place Novice B HIT - **New Can CD!**

Trial 4 - 4th place Novice B

Coulee Kennel Club - LaCrosse - August 7 - Novice B - 1st leg - 3rd place

Kennel Club of Freeborn County - Albert Lea - August 13 - Rally Novice B - 2nd leg

Rochester Minnesota Kennel Club
P. O. Box 5803
Rochester, MN 55903-5803



Rochester Minnesota Kennel Club 2004-2005

Officers

President: Julie Prentice

Ph: 529-2977

Email: japren@aol.com,

Vice-President: Linda Cornick

Ph: 281-8860

Email: newlindac@hotmail.com

Recording Secretary: Diana Mann

Ph: 252-9018

Email: murphymann88@yahoo.com

Corresponding Secretary: Marie Christiansen

Ph: 289-9379

Email: marie@agstrobels.com

Treasurer: Caroline Baihly

Ph: 867-4815

Email: cdbaihly@msn.com

Membership Chair: Patti Wiebe

Ph: 876-2345

Email: tobandals@earthlink.net

Newsletter Editor: Diana Mann

Ph: 252-9018

Email: murphymann88@yahoo.com

Board Members

Pat Campbell (2006) Email: patron@rconnect.com

Stephanie Meyer (2007) Email: jewelweim@hotmail.com

Diane Whipple (200) Email: whipster@smig.net

RMKC Website: <http://www.rmkc.8m.com>

Monthly Meeting

Date: September 12, 2005

Time: 7:00 pm

Location: Good Shepherd Lutheran Church ~ 559 20th St SW

Directions from downtown Rochester: South on Broadway to 20th St SW (Kwik Trip) - turn right (W) - go approx 5 blocks to top of hill - Church is on the right, set back from the street